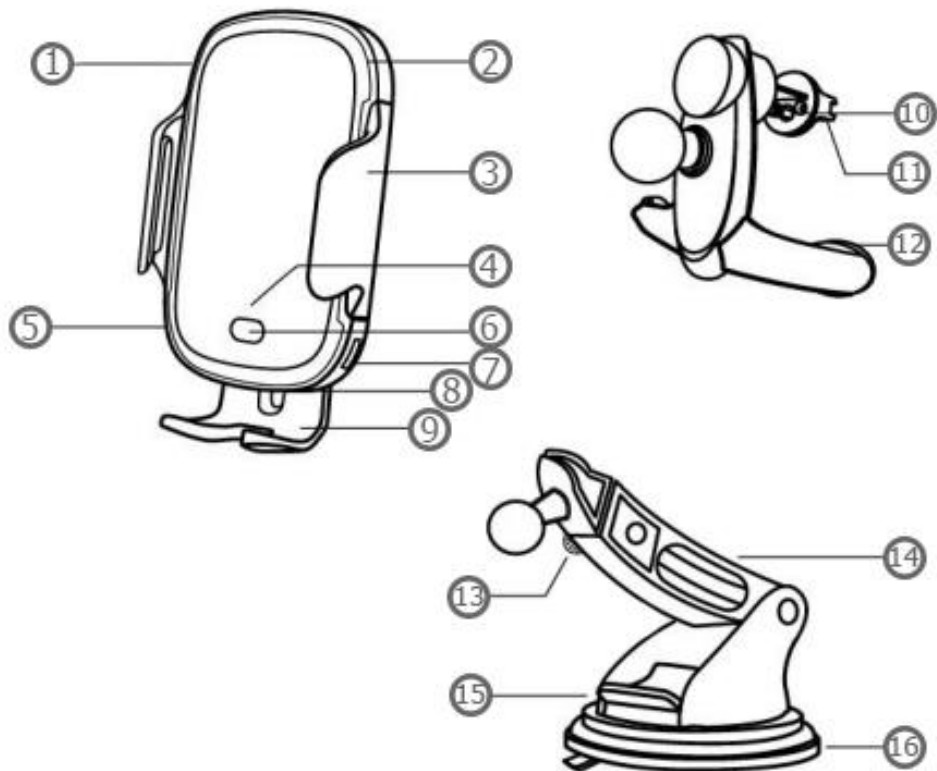


User Manual for Baseus Light Electric 15W Wireless Car Charger / Car Holder WXHW03-01



Specifications

- Input: DC 5V/2A, 9V/2A, 12V/1.67A
- Output: 5W, 7.5W, 10W, 15W (max)
- Holder dimensions: 70mm - 100mm (4.7" - 6.5")
- Supports FOD (foreign object detection)
- Multiple safety-protection features



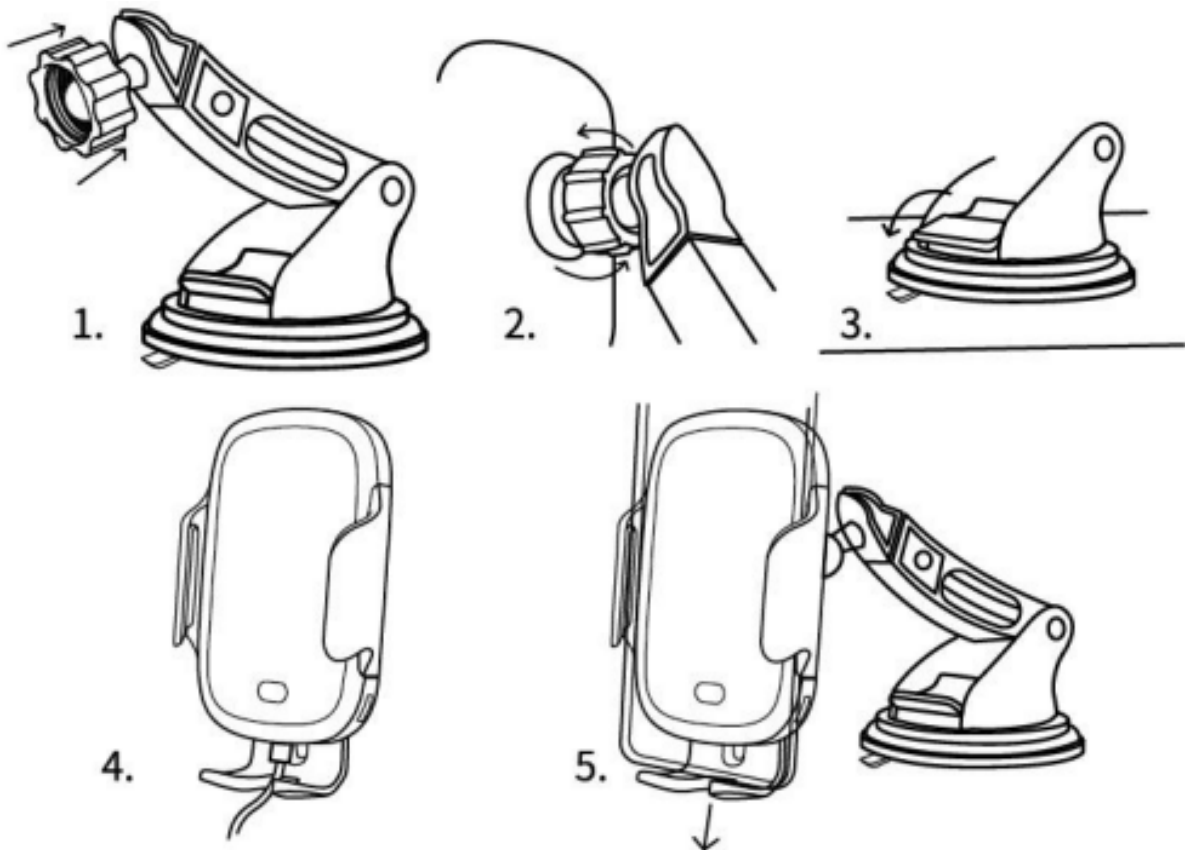
1. Quick wireless charging
2. Current light strip
3. Clamp arm
4. IR indicator light
5. B button
6. IR sensor
7. A button
8. Input interface

9. Bottom arm
10. Spring clamp
11. Blade flipping
12. Silicone pad
13. Adjusting knob
14. Telescope link
15. Air compression switch
16. Base

Installation steps

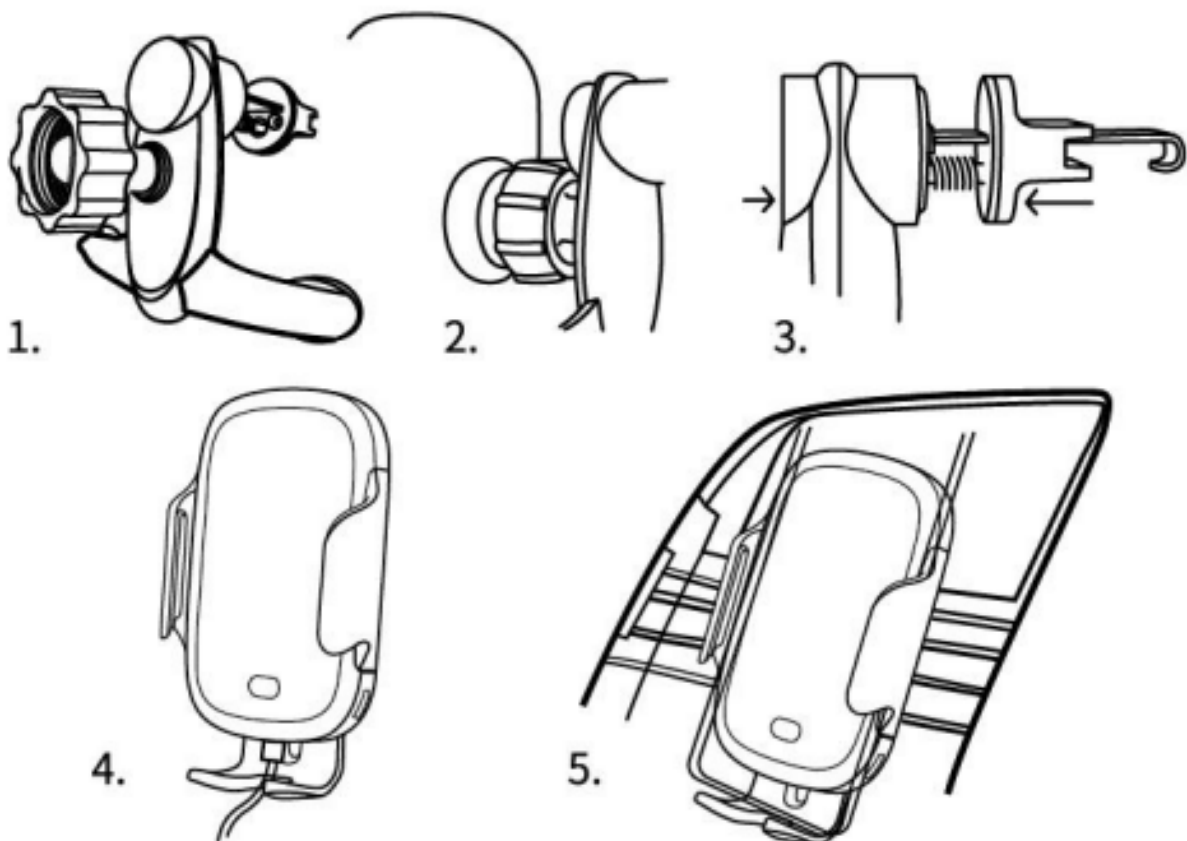
Suction-cup method:

1. Set the knob on the ball head.
2. Insert the ball into the rear of the holder and tighten it.
3. Clean the dashboard, firmly attach the suction cup and press the air compression switch
4. Connect the power cable
5. Place your smartphone



Air-vent method:

1. Set the knob on the ball head
2. Insert the ball into the rear of the holder and tighten it.
3. Press the air outlet base spring to fix the air outlet base into the air outlet blades.
4. Connect the power cable
5. Place your smartphone



Current light and buttons

Blue/cyan halo shows the status of power connection and power supply. If it lights green it means that it's in standby mode. If you see the green light cycle on both sides, it's in the working state. If the red light flicking on the whole circle it means that there is some foreign object detected.

Tap button A or B, or tap them both at the same to open or close the clamping arms. To turn the light on or off, long-press the A button.